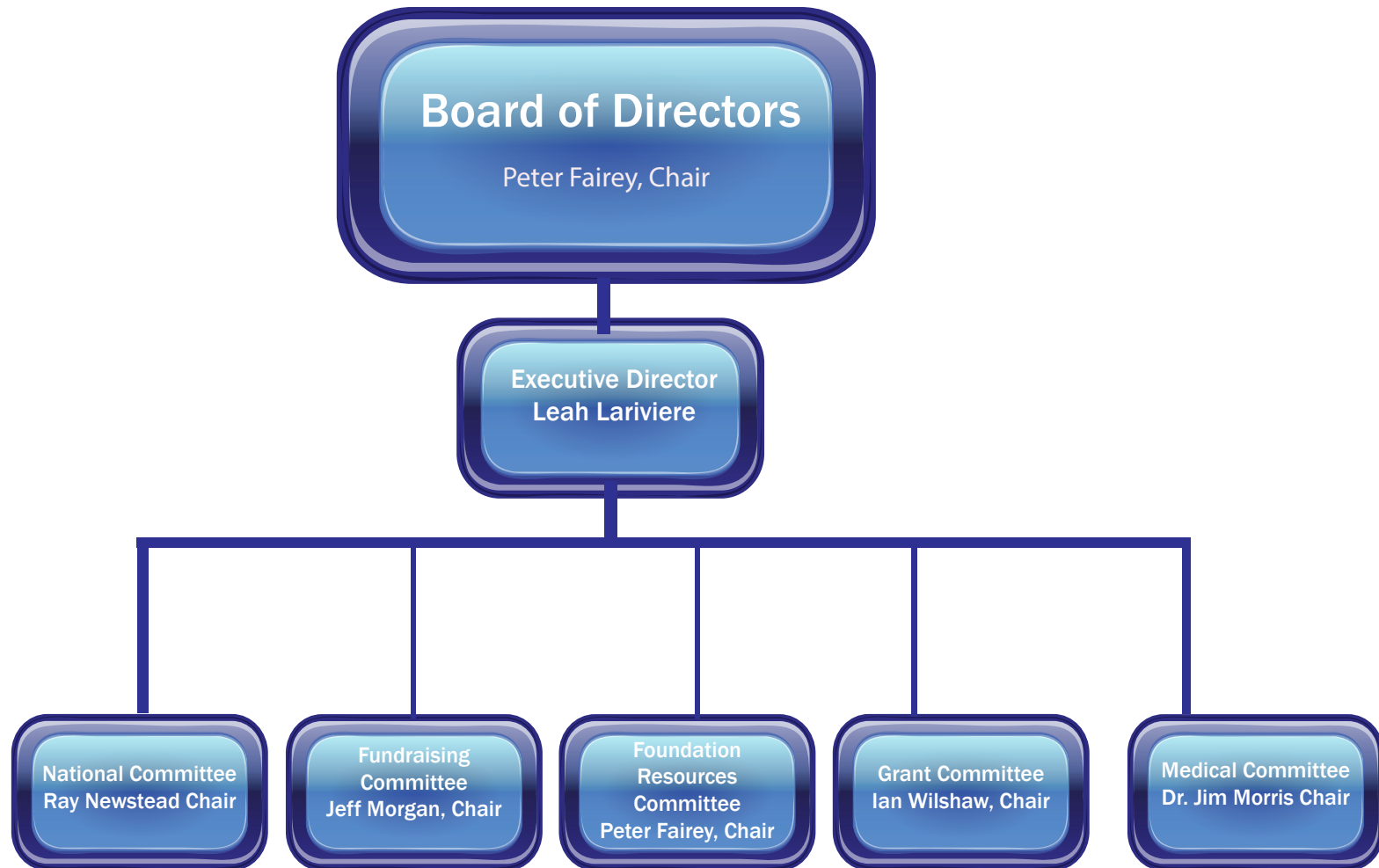
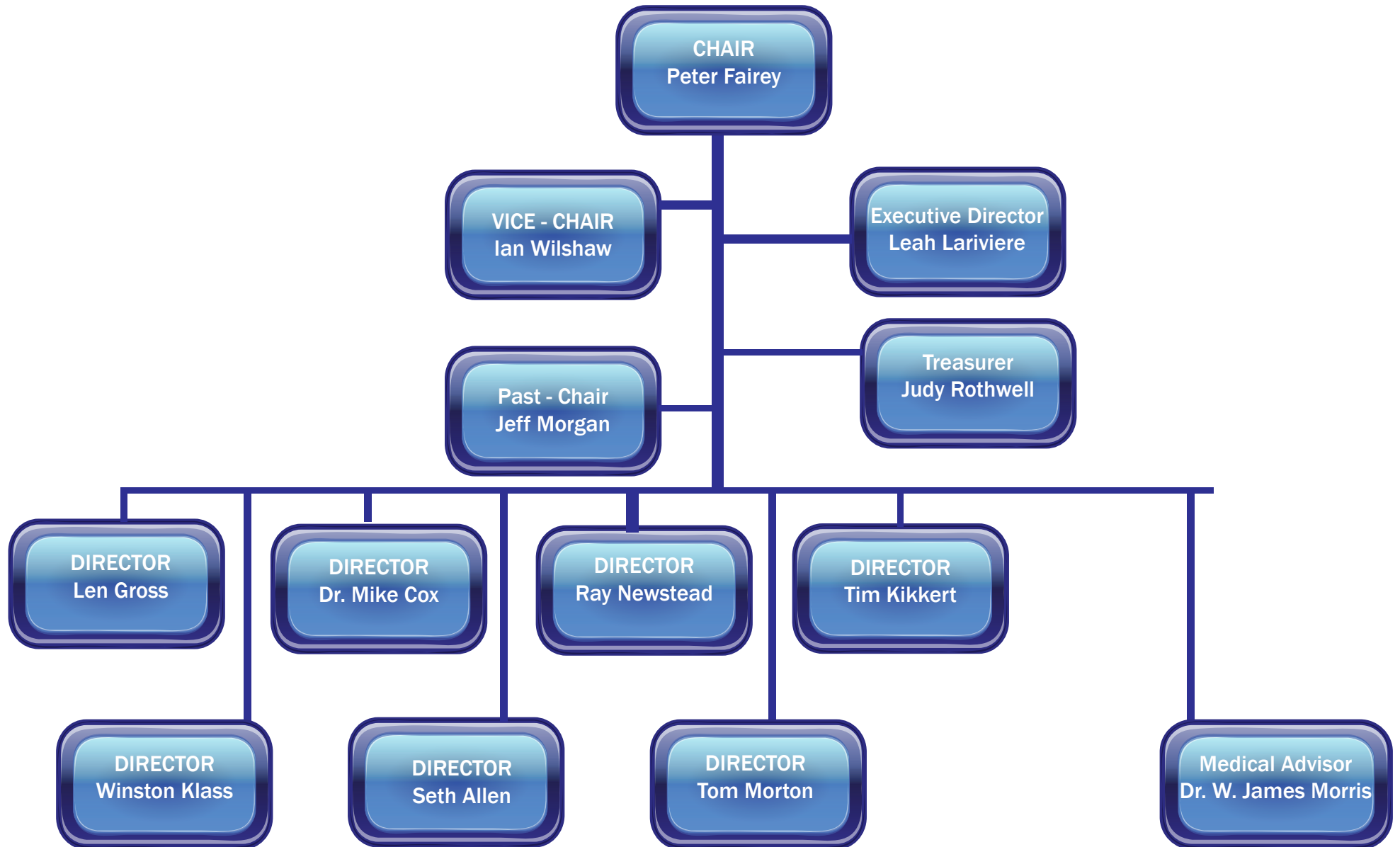


Prostate Cancer Foundation BC



PCFBC Board



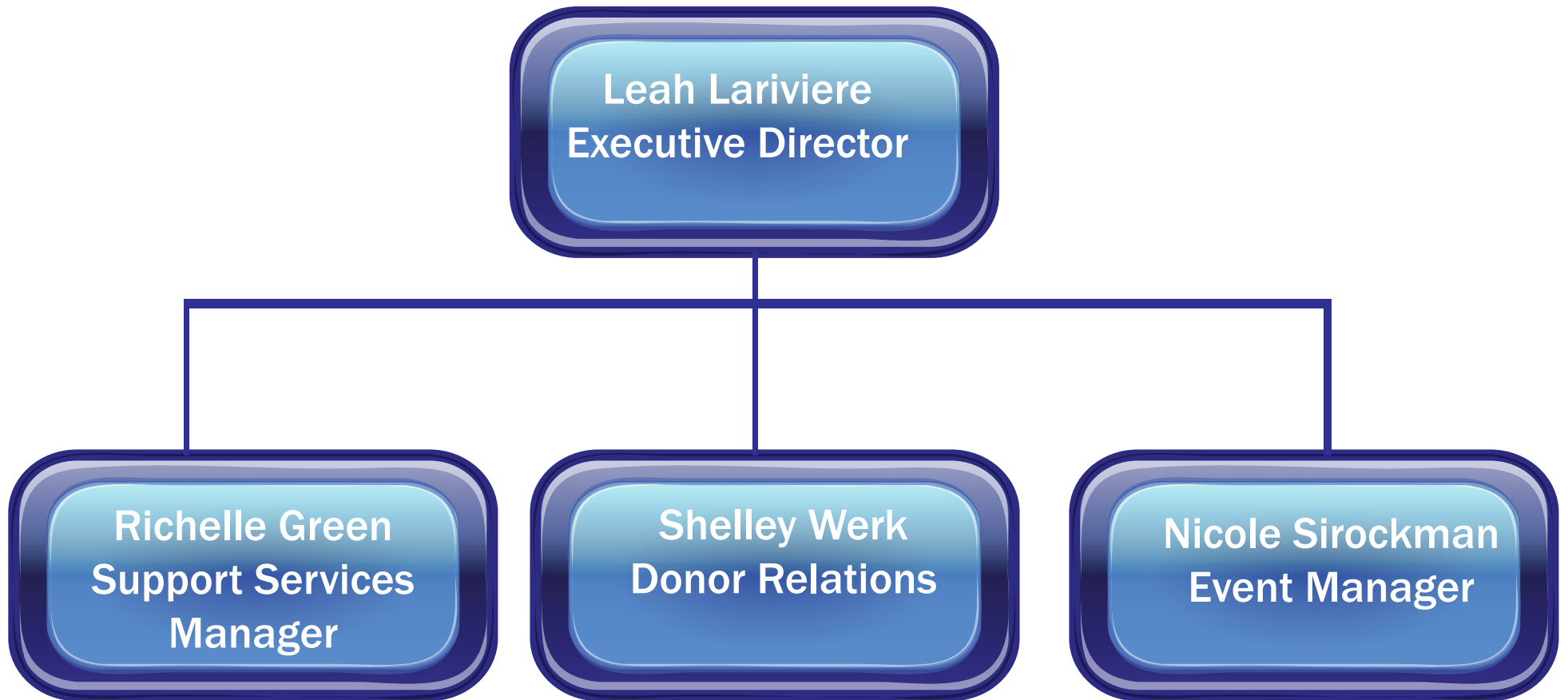
STAFF

Leah Lariviere
Executive Director

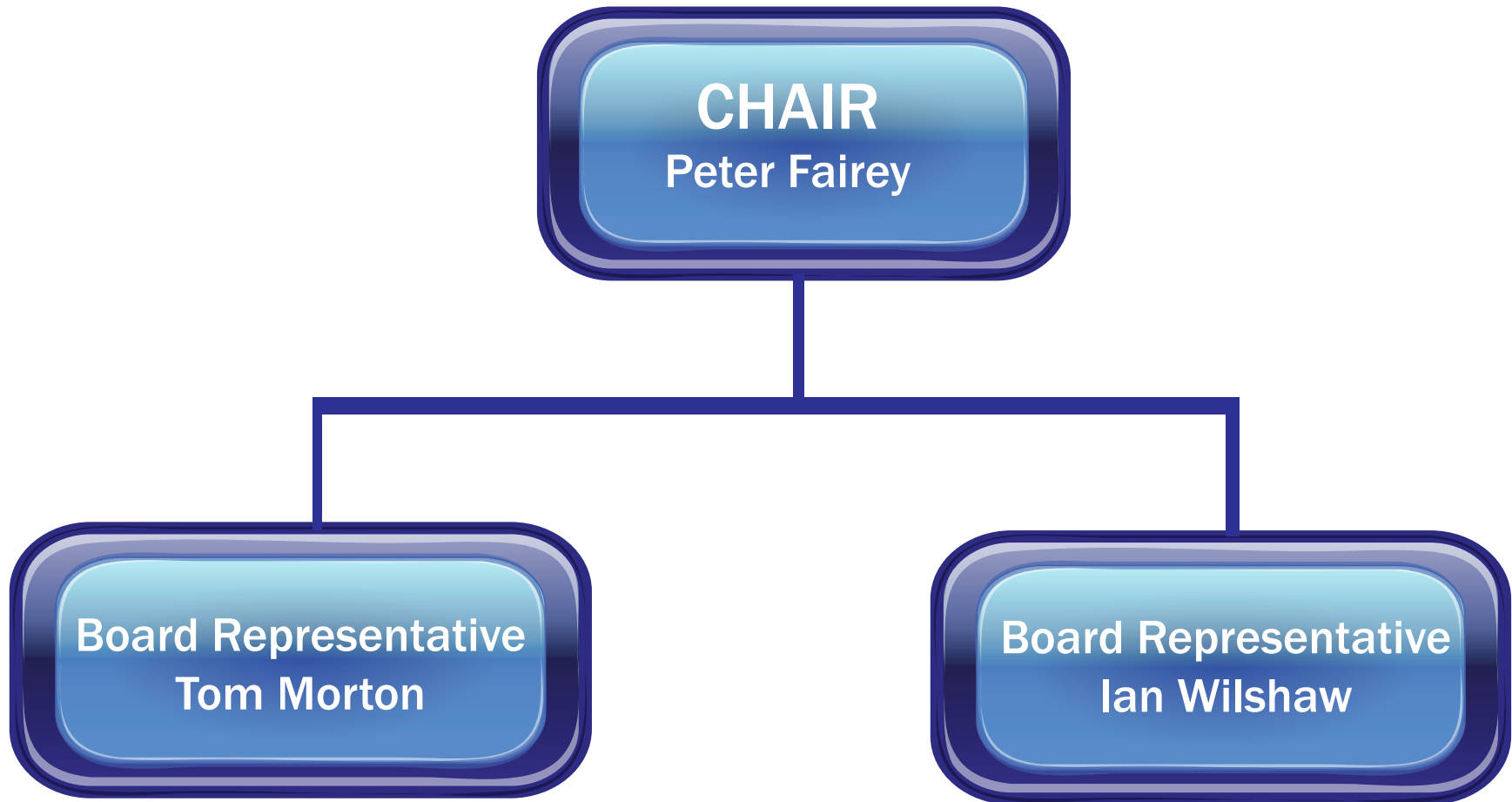
Richelle Green
Support Services
Manager

Shelley Werk
Donor Relations

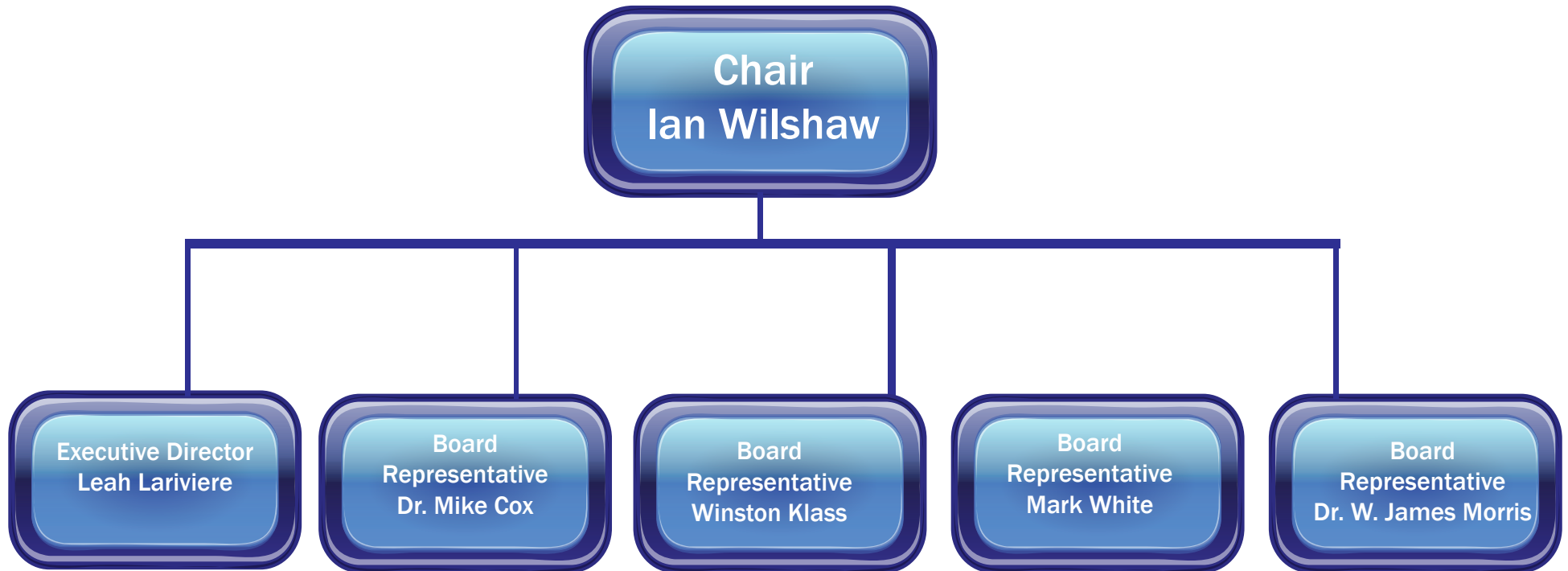
Nicole Sirockman
Event Manager



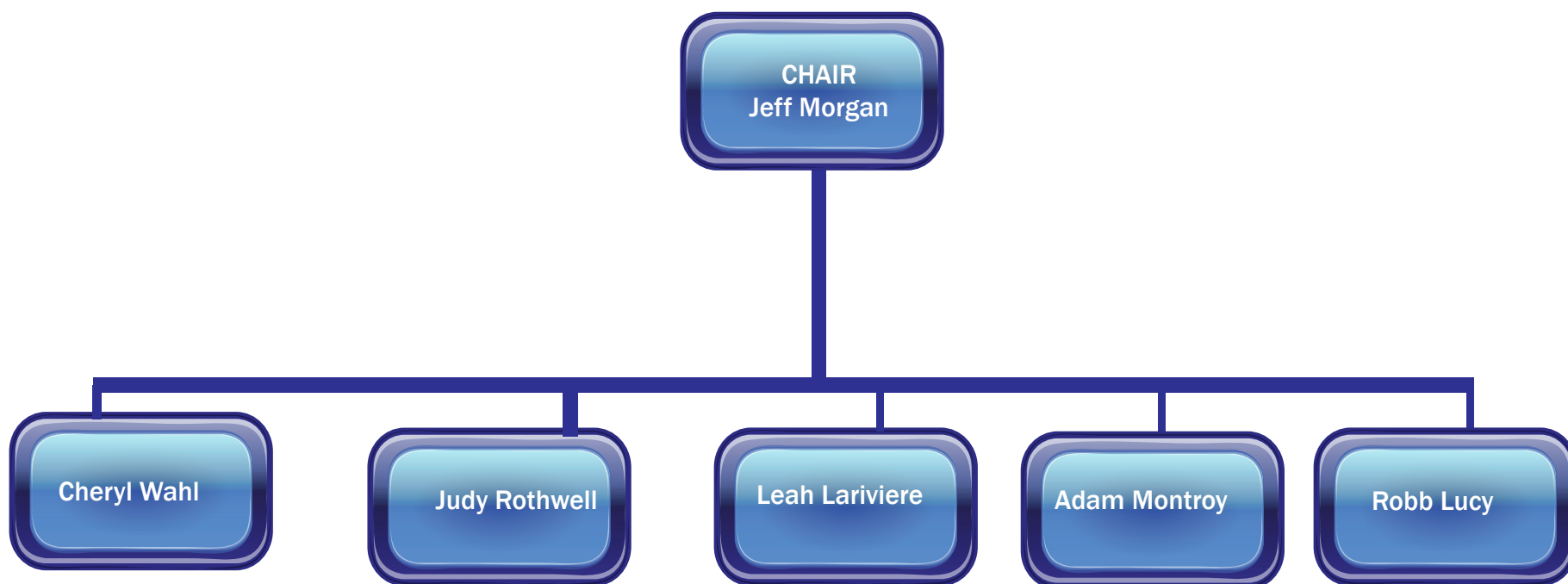
Foundation Resources Committee



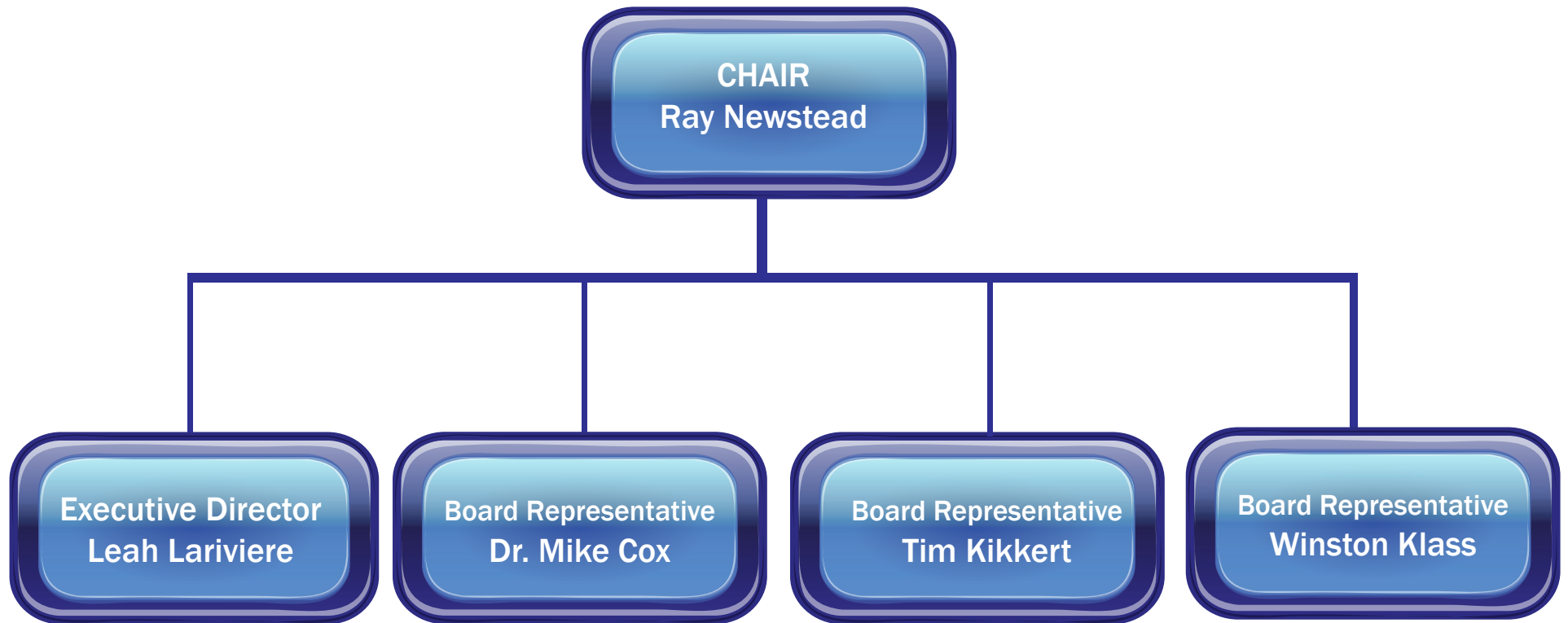
Grant Committee



Fundraising Committee



National Support Committee



Medical Committee

